

---

**GEOGRAPHY**

**2217/13**

Paper 1

**May/June 2014**

INSERT

**1 hour 45 minutes**

---

**READ THESE INSTRUCTIONS FIRST**

This Insert contains Photographs A and B for Question 2, Fig. 4 for Question 3, Photograph C for Question 4, Photograph D and E for Question 5, and Photograph F for Question 6.

The Insert is **not** required by the Examiner.



---

This document consists of **8** printed pages.

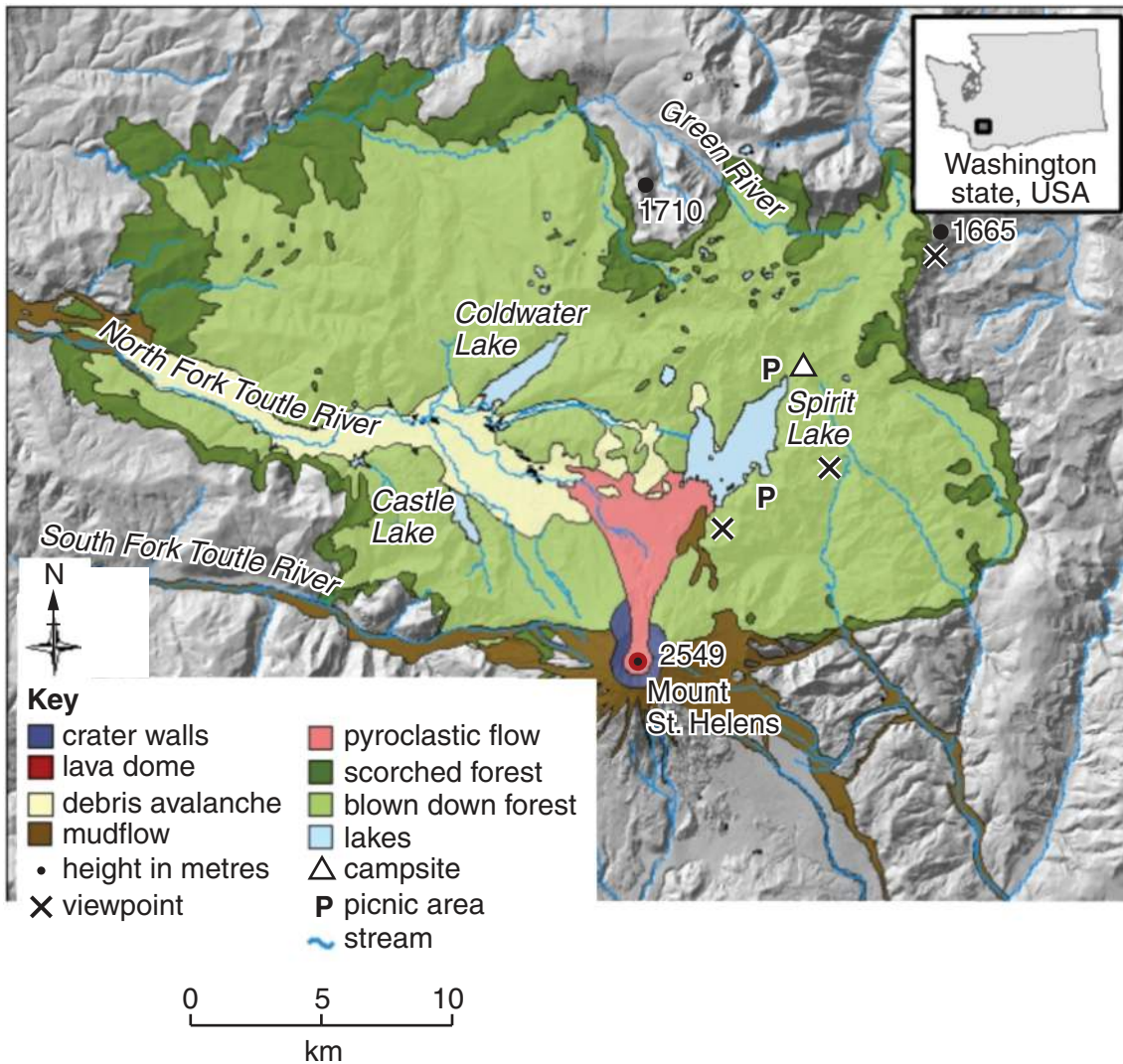
Photograph A for Question 2



Photograph B for Question 2



Fig. 4 for Question 3



## Copyright Acknowledgements:

- Question 1 Fig. 1 © [http://option.canada.pagesperso-orange.fr/immigration\\_multi.htm](http://option.canada.pagesperso-orange.fr/immigration_multi.htm)  
 Question 1 Fig. 2 © <http://www12.statcan.ca/census-recensement/2006/as-sa/97-557/figures/c2-eng.cfm>  
 Photographs A–F S. Sibley © UCLES.  
 Question 2 Fig. 3 © GCSE Geography; Unit 4 Topic 5; National Extension College.  
 Question 3 Fig. 4 © <http://www.fs.fed.us/pnw/mtsthelens/maps/>  
 Question 3 Fig. 5 Adapted from: © <http://news.bbc.co.uk/1/hi/8685913.stm>  
 Question 4 Figs. 6A and 6B © Jane Ferretti and Brian Greasley; *GCSE Geography Exam Revision Notes*; p. 20; Phillip Allan Updates; 2001; ISBN 0860034410.  
 Question 6 Fig. 8 © <http://www.dnaindia.com/mumbai/1605867/report-versova-beach-raises-a-stink>

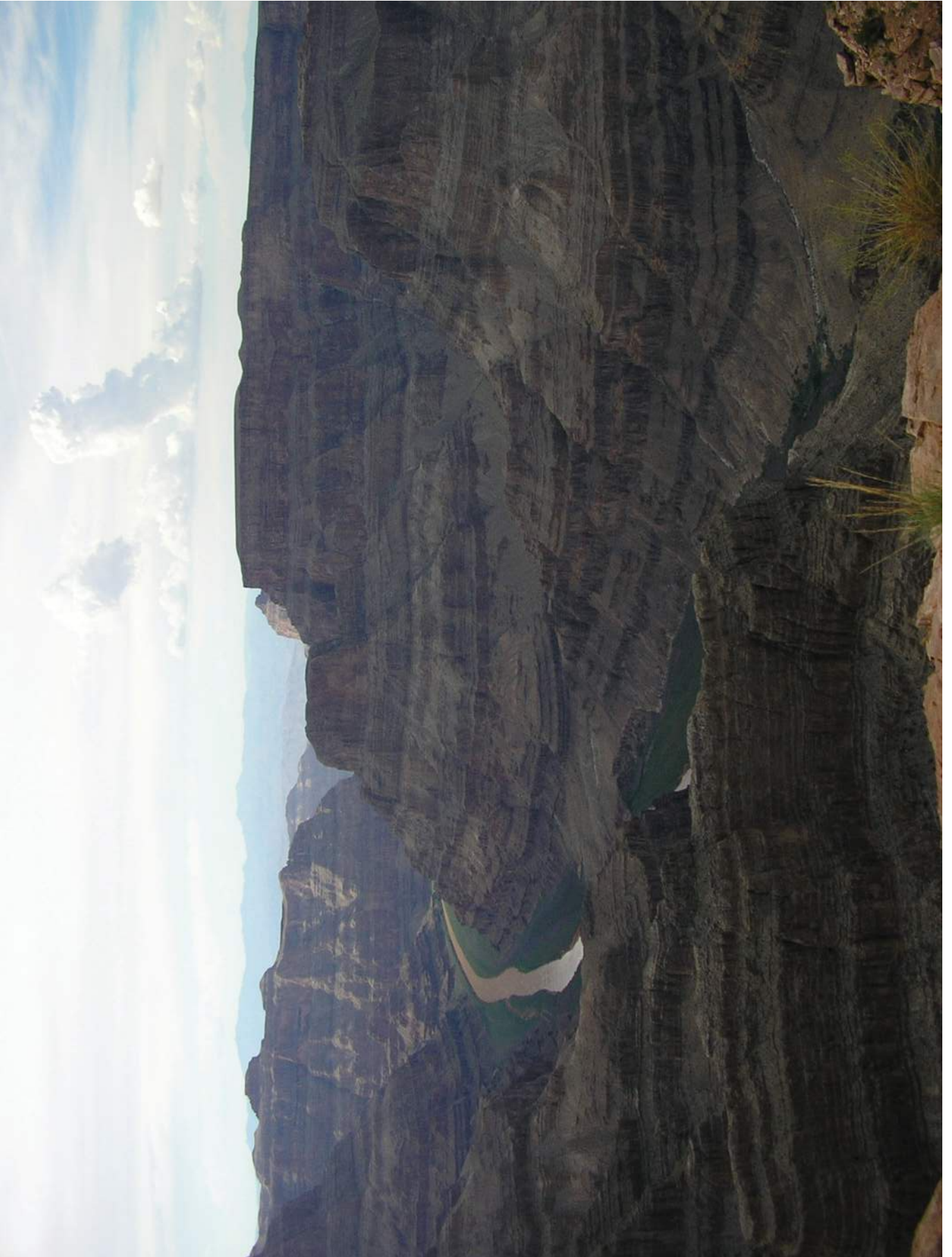
Permission to reproduce items where third-party owned material protected by copyright is included has been sought and cleared where possible. Every reasonable effort has been made by the publisher (UCLES) to trace copyright holders, but if any items requiring clearance have unwittingly been included, the publisher will be pleased to make amends at the earliest possible opportunity.

Cambridge International Examinations is part of the Cambridge Assessment Group. Cambridge Assessment is the brand name of University of Cambridge Local Examinations Syndicate (UCLES), which is itself a department of the University of Cambridge.

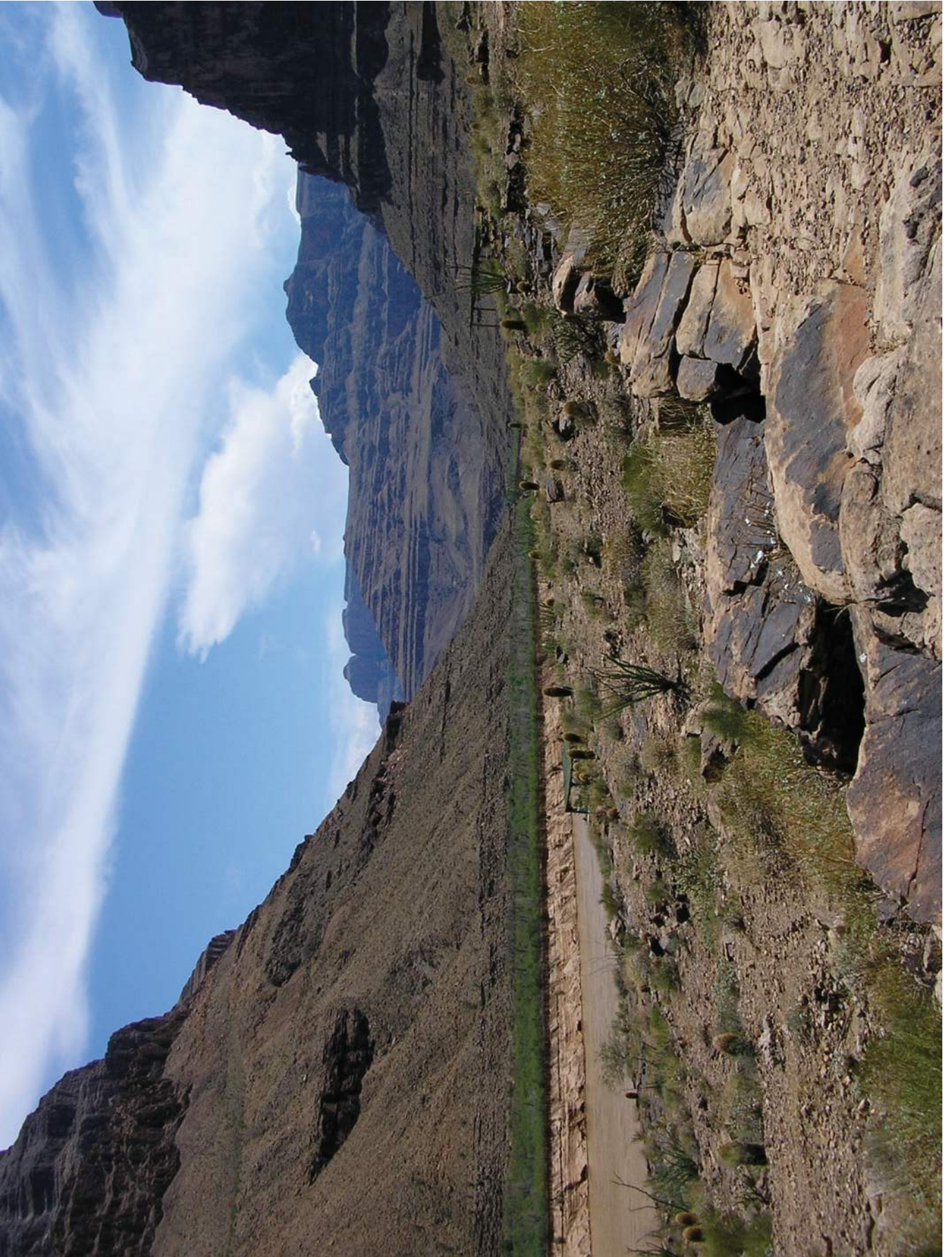
Photograph C for Question 4



Photograph D for Question 5



Photograph E for Question 5



Photograph F for Question 6

